



# St. Louis County Comprehensive Plan

<http://planslcmn.com>



# Timeframe

- Complete analysis of current conditions 2017 – February 2018
- Develop draft goals and policies March 2018-May 2018
- Public input May-August 2018
- Public hearings- November 2018
- County Board- Plan Adoption -December 2018
- Implementation 2019

# Land Use Report

## *St. Louis County Comprehensive Land Use Plan*

*DRAFT, Version 3*

**St. Louis County, Minnesota**

Prepared by:



Date: August 16, 2017



# Findings



- ▶ Too much residential zoning for the population base
  - ▶ Residential zoning was used as a tool to protect certain areas from gravel pits or other types of development deemed undesirable
  - ▶ Over one million acres are zoned residential




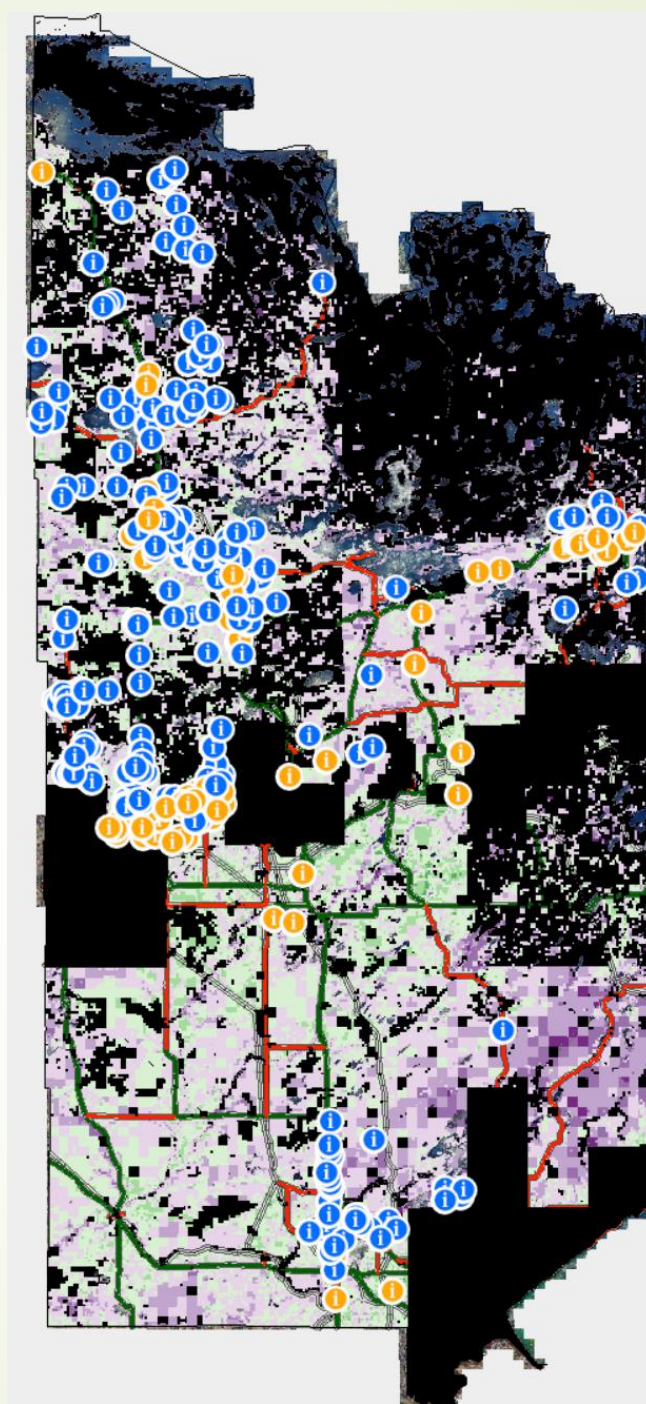
# Findings continued

- ▶ What will happen to baby boomers?
  - ▶ Will they stay in lakeshore or rural areas or move to cities?
  - ▶ Can cities absorb that future growth?
- ▶ 5,044 (33%) lots are platted and are not developed
  - ▶ These could absorb future growth on lakeshore

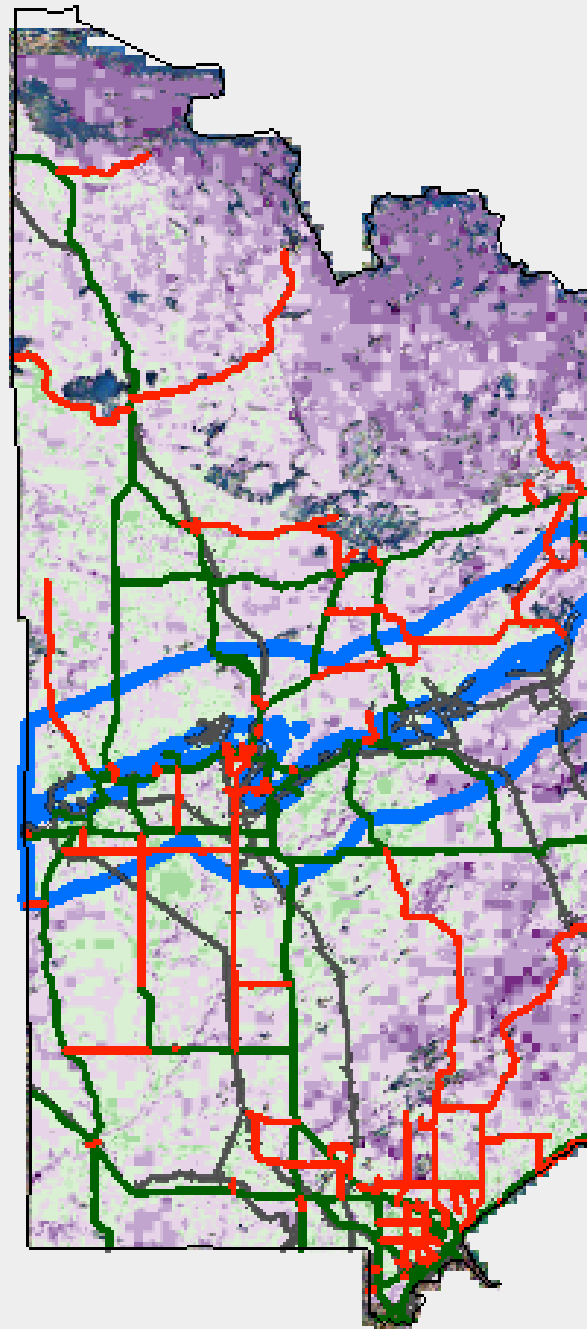
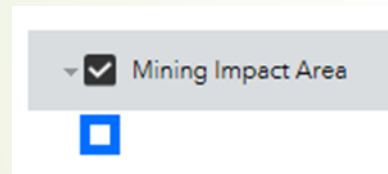


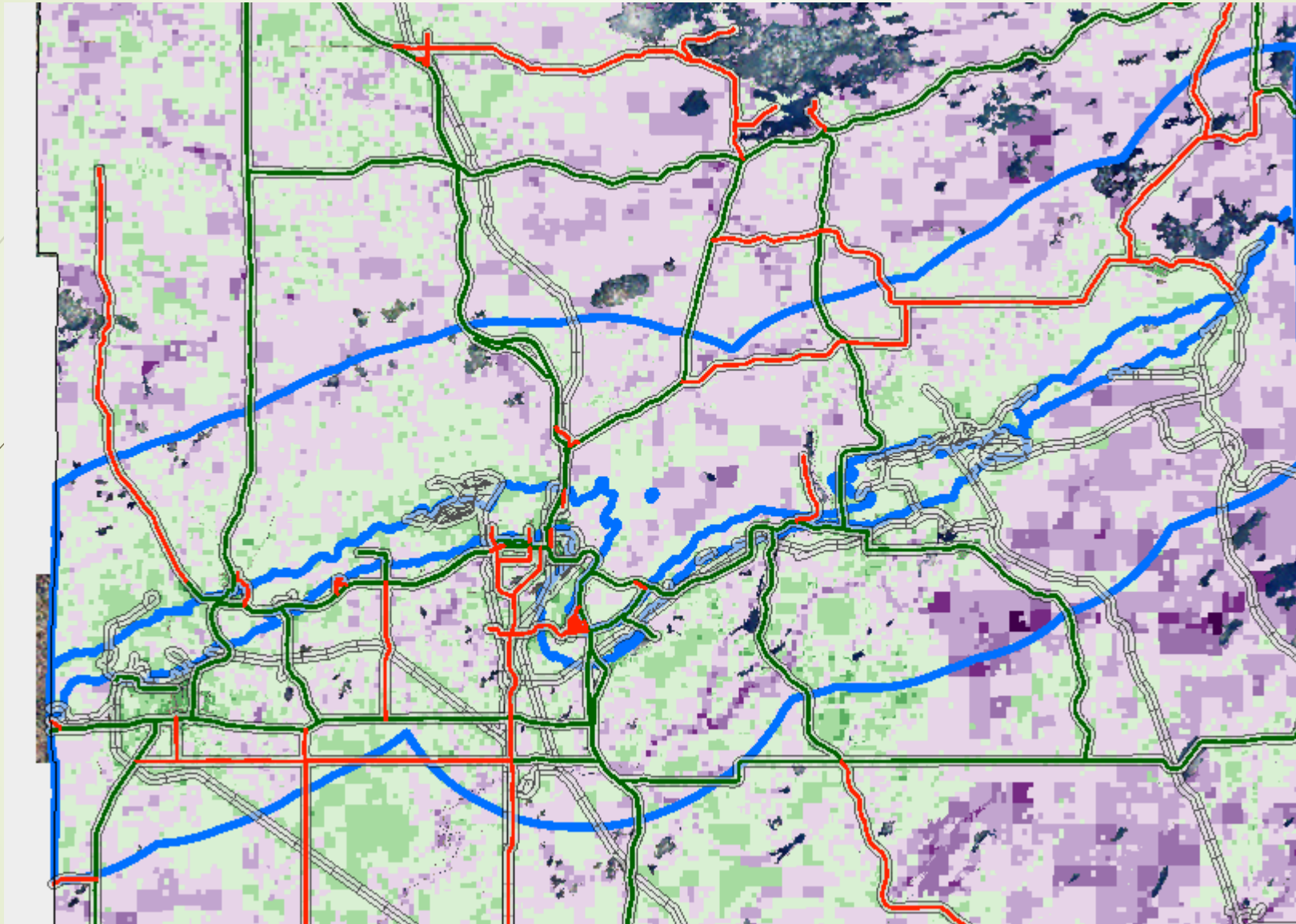
# Analysis Maps for future concept areas

-  Comment
-  Industrial



Analysis Maps for  
future concept  
areas with Mining  
Impact Area



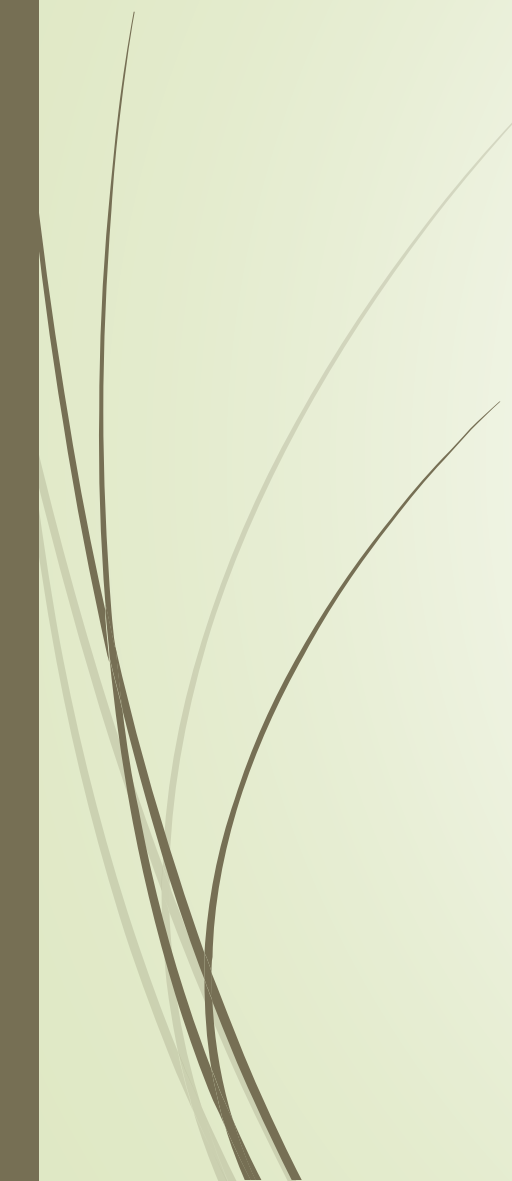


▾  Mining Impact Area





# Next Steps

- Wrap up analysis
  - Develop goals and policies
  - Public input/hearings
  - Plan Adoption
  - Update Zoning
- 



# Questions?

- ▶ Jenny Bourbonais – Senior Planner (218) 749-0629
  - ▶ Mary Anderson – Physical Planning Manager (218) 749-0626
  - ▶ Scott Harmstead – SRF Consulting (701) 354-8405
- 