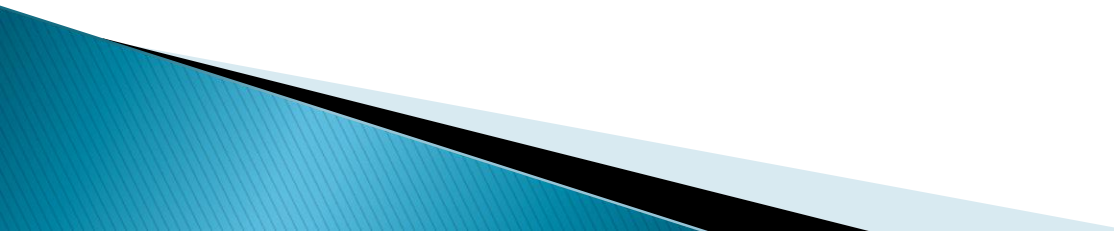
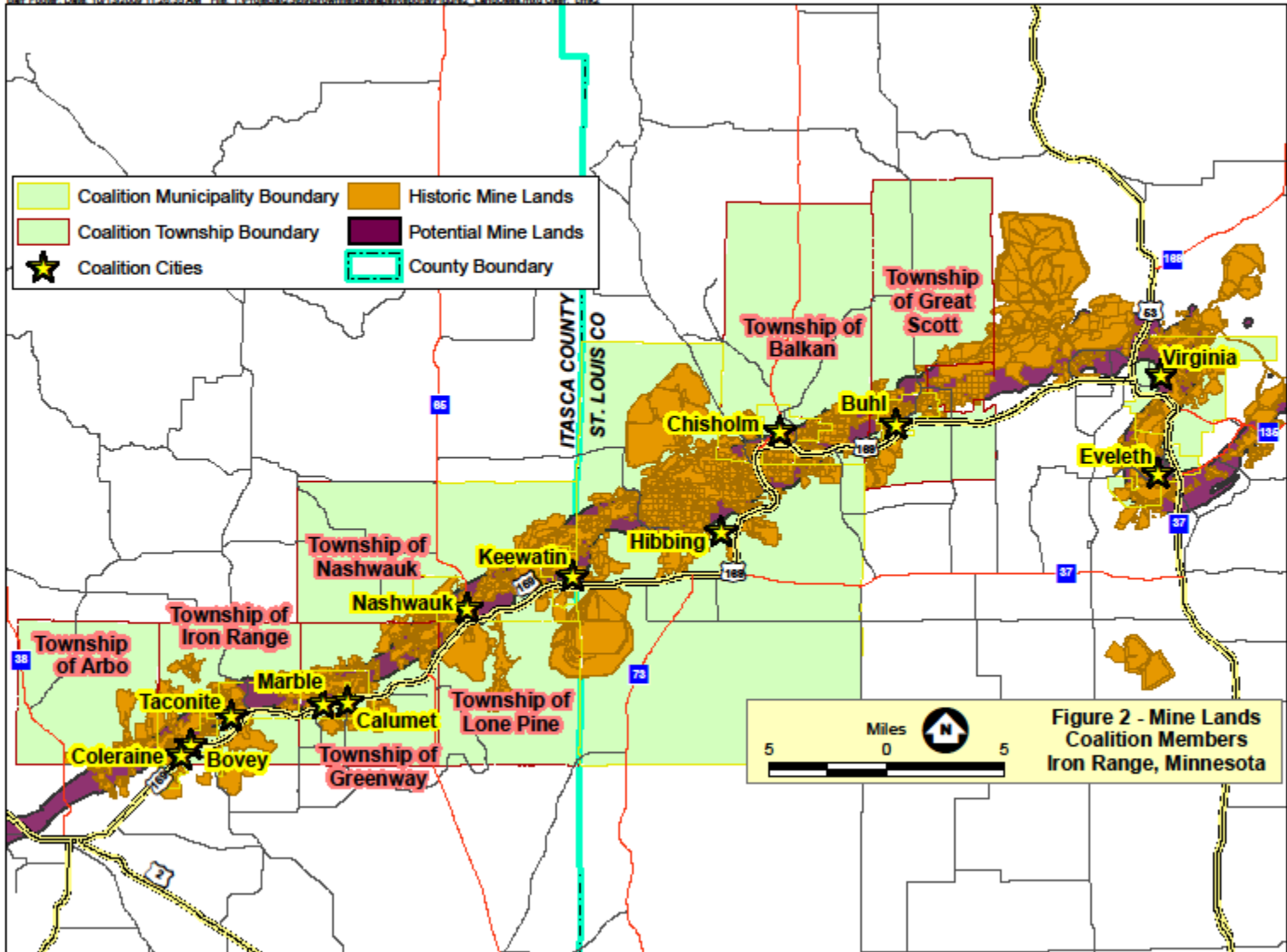


Central Iron Range Brownfields Assessment Coalition

- ▶ Iron Range Resources approved a Commercial Redevelopment Grant – \$54,800
 - ▶ Enable the Coalition to construct a GIS database, conduct site selection and planning, implement data management, work with local governing units to identify sites, create a website, write grants, set up accounting, grant compliance, create standard operating procedures, attend meetings, prepare documents and overall administration.
- 

EPA FY10 Community–Wide Coalition Assessment Grant

- ▶ **Applicant:** City of Chisholm, Minnesota on behalf of the Iron Range Assessment Coalition.
- ▶ **Federal Funds Requested:** \$1,000,000
- ▶ **Application Deadline:** October 16, 2009
- ▶ **Coalition:** The cities of Eveleth, Virginia, Buhl, Chisholm, and Hibbing in St Louis County, Minnesota. The Cities of Keewatin, Nashwauk, Calumet, Marble, Taconite, Bovey, and Coleraine in Itasca County, Minnesota. The townships of Great Scott, Balkan, and Arbo in St. Louis County, Minnesota. The townships of Lone Pine, Iron Range, Nashwauk, and Greenway in Itasca County, Minnesota.



What is an Assessment Grant?

- ▶ Assessment grants provide funding for a grant recipient to:
 - ▶ Inventory Sites: Compile a list
 - ▶ Characterize Sites: Identify past uses
 - ▶ Assess Sites: Determine existing contamination
 - ▶ Conduct Cleanup and Redevelopment Planning: Scope and plan process
 - ▶ Conduct Community Involvement: Inform and engage community

What is an Assessment Coalition

- ▶ Is comprised of three or more eligible entities
 - ▶ Lead coalition member (i.e. Chisholm) submits a Community-wide Assessment grant proposal on behalf of itself and other members
 - ▶ The coalition may request up to \$1 million to work on a minimum of five brownfields sites
- 