



CENTRAL IRON RANGE BROWNFIELD REDEVELOPMENT PROGRAM (CiRB)

- REVIEW 2011 GOALS AND OBJECTIVES
- Accomplishments
- EPA Grant and what communities need to do.

What is a Brownfield Site?

Any previously used land where redevelopment is inhibited due to real or perceived contamination.



Former Railyard, Kansas City

“Opportunities May Outweigh the Challenges”

CiRB Program Concepts – A regional program for an area with shared socioeconomics.

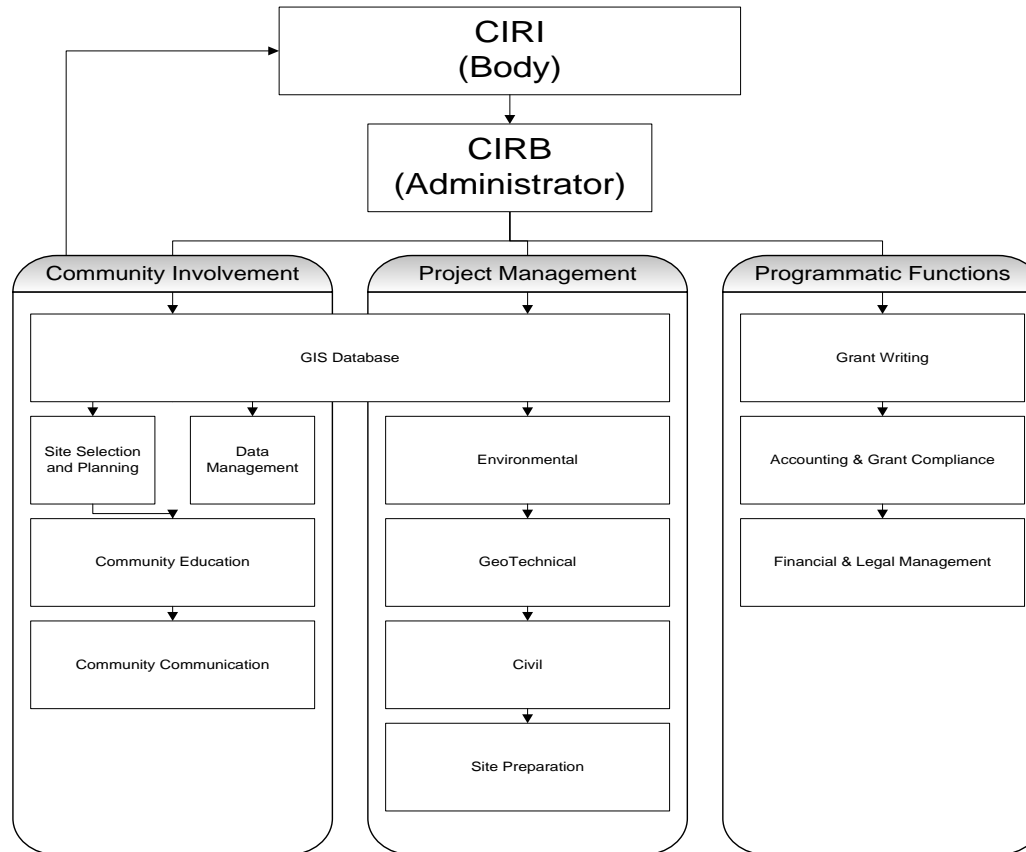
1. Function as a Project Manager for Development of Brownfield Sites into Usable, Marketable Locations.
 - Environmental Investigation and Cleanup
 - Geotechnical and Civil Engineering.
 - Site Preparation.
2. Pursue Applicable Funding Opportunities, Including State and Federal Grants.
3. Maximize Potential to Leverage Funding.
4. Increase Competitiveness for Grants.
5. Integrate Local and Regional Planning Directives.
6. Seek Community Involvement.
7. Provide Brownfield Management Strategies.
8. Provide Administration Under One Roof.
9. **Developed Properties is the deliverable of CiRB**



Who CiRB Will Work With...

- Every Member Community
- IRR
- Laurentian Vision
- West Range Mine Planning Board
- Minnesota Department of Employment and Economic Development (DEED)
- Minnesota Pollution Control Agency (MPCA)
- Minnesota Department of Natural Resources (DNR)
- U.S. Environmental Protection Agency (EPA)
- Environmental & Civil Engineering Professionals
- Attorneys & Accountants
- Local Contractors
- Others

4. CiRB Specifics





Accomplishments

- 17 Sites Inventoried
- GIS Database and Website
- Successful EPA Assessment Grant (\$726,500)
- Program Administrator
- CiRB is now IRB – Iron Range Brownfields Program

Administration Process for the EPA Grant

Iron Range Brownfield Coalition

IRB

Provides administration for the Coalition

- Initial Grant Administration Complete
- MOA and **Site Selection Criteria**) January 2012
- Retain Consultants February 2012
- On-going Grant Administration Through August 2014



Site Selection for EPA Grant – Step 1 – Eligibility Screening

Conducted by IRB Administrator using information provided by City or Township.

- Is the site on the National Priorities List?
- Is the owner of the Site Potentially Liable for the contamination under CERCLA section 107?
- If the City or Township does not own the Site, they must not be a potential responsible party and must have access or ability to access the Site.

Site Selection for EPA Grant - Step 2 – Prepare Development Resource Potential Document

Prepared by outside Consultant, funded by IRRRB

- Site Characteristics
 - Size, topography, vegetation, wetlands, soils, drainage, etc.
- Ownership/Control
 - Current and previous ownership, zoning, previous environmental work,
- Development Potential
 - Utilities, roads, existing structures developable acreage, etc.

Site Selection for EPA Grant - Step 3 – Jobs/Taxbase and Environmental Benefit Ranking

Prepared by the City or Township using information from
Step 2 reviewed by IRB Administrator

- Development Potential - 8 points
- Tax Base Improvement – 4 points
- Environmental Concerns – 8 points
- Access and Implementability – 6 points



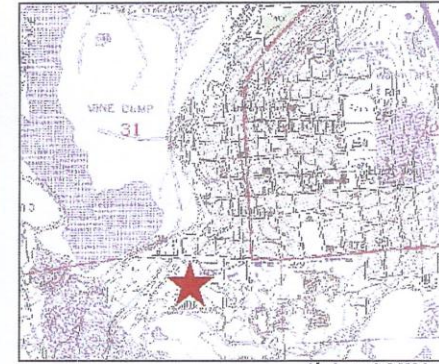
Site Selection for EPA Grant - Step 4 –
Submittal to EPA Project Officer for
Final Eligibility Determination

Site Selection for EPA Grant - Step
5 – Obtain majority vote at
monthly CIRI meeting.



Inventoried Sites

1. Chisholm - Old Waste Water Treatment Plant
2. Chisholm - Old Maintenance Building
3. Chisholm - Old Mining and Waste Site
4. Virginia - SMDC Parking Lot (former Oliver Shops)
5. Virginia - Former County Garage
6. Virginia - Trap Range
7. Virginia - Former Auto Dealer Lot
8. Virginia - AEOA Building
9. Virginia - Former Greiners Troy Dry Cleaner
10. Virginia - Former ICO
11. Virginia - Former Rail Yard
12. Hibbing - Former Gas Manufacturing Plant
13. Eveleth - Alice Location
14. Gilbert - Former Cook Slurry Site.
15. Marble - Former Gas Station
16. Calumet - Car Crushing Property
17. Arbo - Township Shops.



Field	Site Details
CB_ID	55734-0001
Site_Name	EvTac Mining Parcel #3
Site_Addr1	
Site_Addr2	
Site_City	Eveleth
Site_St	Minnesota
Site_ZIP	55734
Site_LatDD	47.459 51.045
Site_LonDD	-92.5423558 5
Site_PIS	N1/2, N1/2, NE1/4, Sect.5, T. 57 N, R. 17 W
SiteCounty	St. Louis
Site_Twp	
Zoning	
ParcelCode	
Site_Des c	Partially wooded, with various structures
Site_Acres	12.5 (est.)
Ex_Struct	
Ex_Util	
PastUses	
Site_Cantam	none known
Site_Tas ks	
Site_Notes	
Prop_Us e	
Prop_Jobs	
Devel_Name	
Devel_Cant	
Devel_Add1	
Devel_Add2	
Devel_City	
Devel_St	
Devel_ZIP	
Devel_Ph	
Devel_E	
Owner_Name	
Owner_Cant	
Owner_Add1	
Owner_Add2	
Owner_City	
Owner_St	
Owner_ZIP	
Owner_Ph	
Owner_E	

